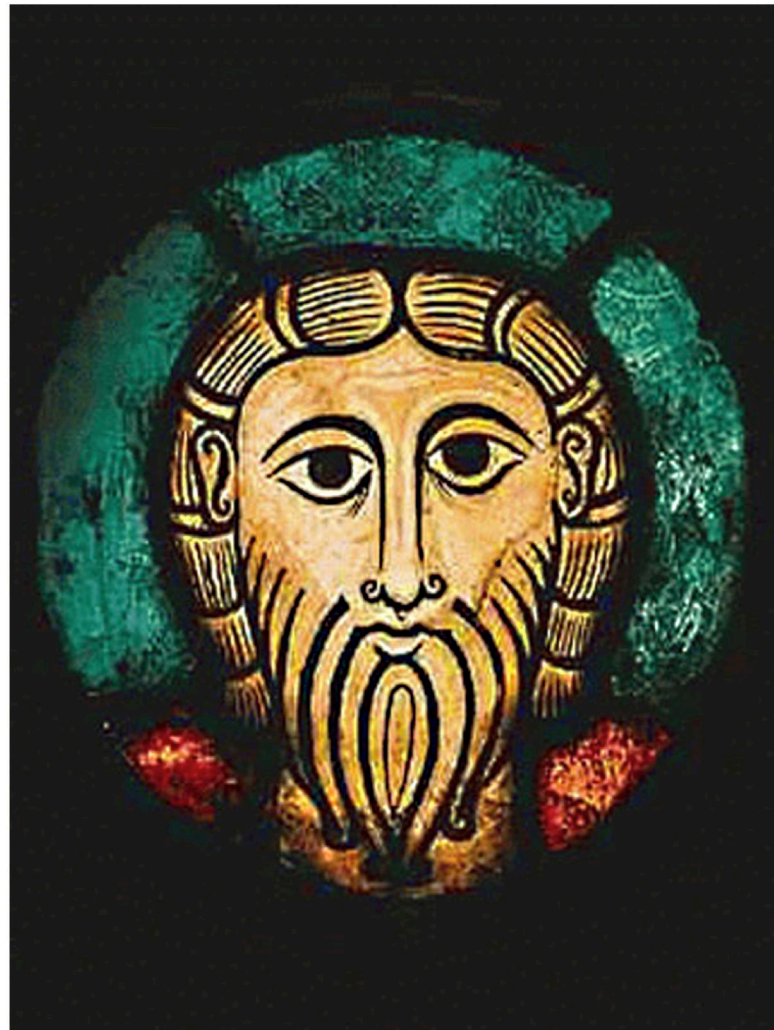




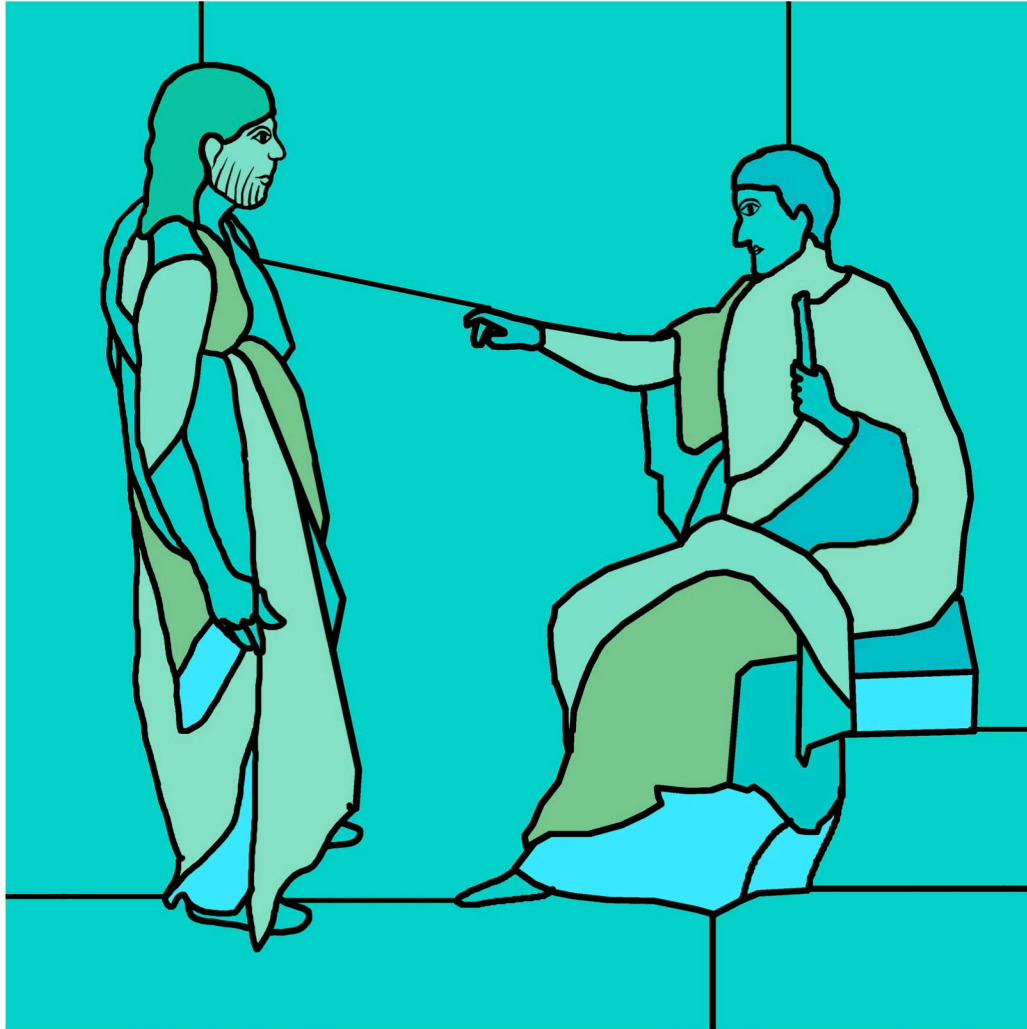
# Chemin de Croix

Claude Augsburger

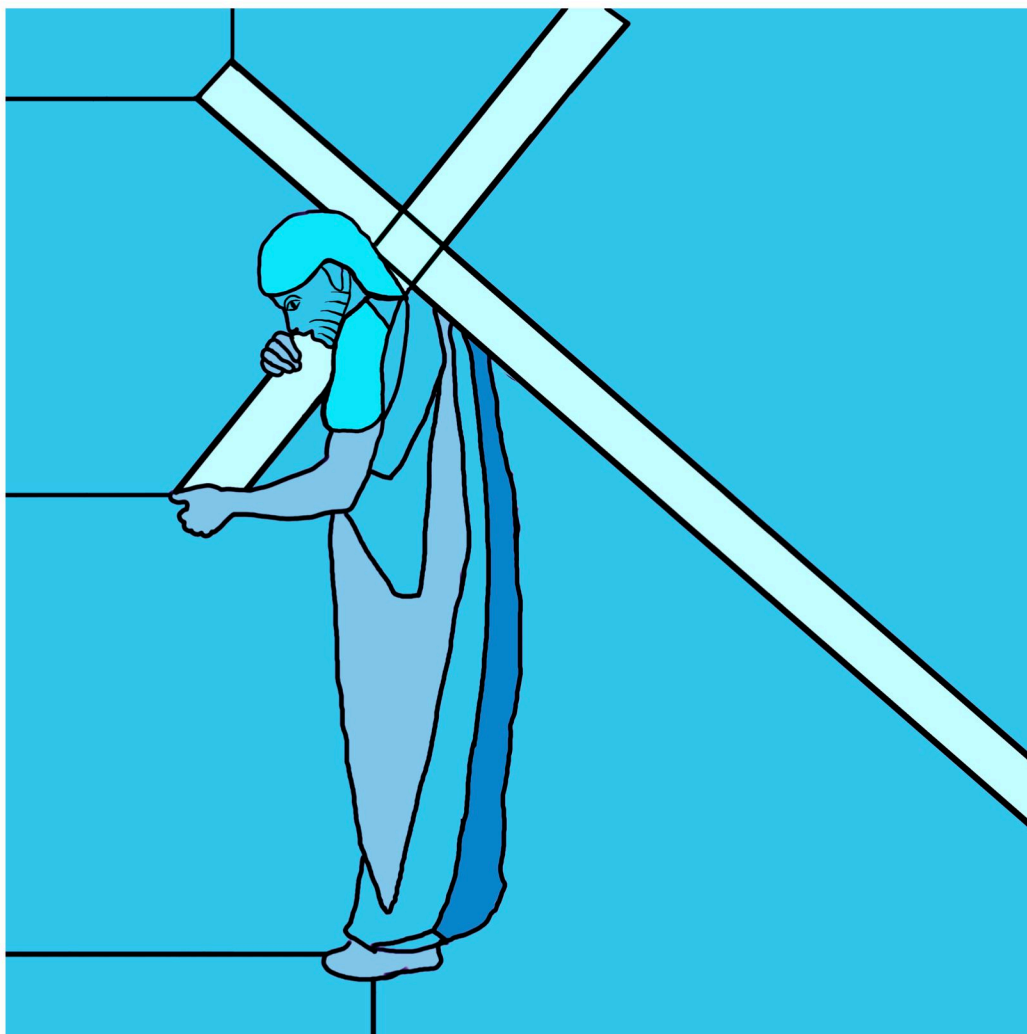


I

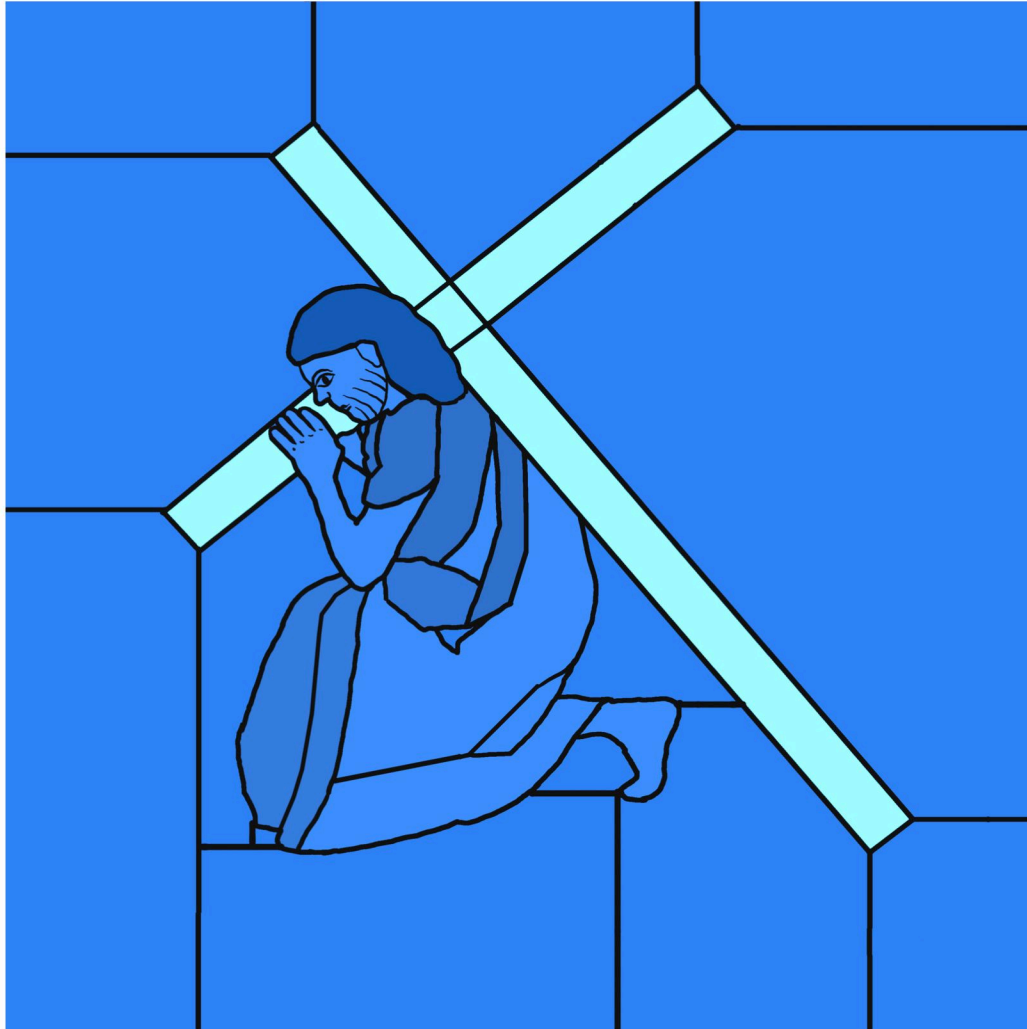
Le plus ancien vitrail représentant un personnage est la tête de Christ de Wissembourg, datant de 1070.



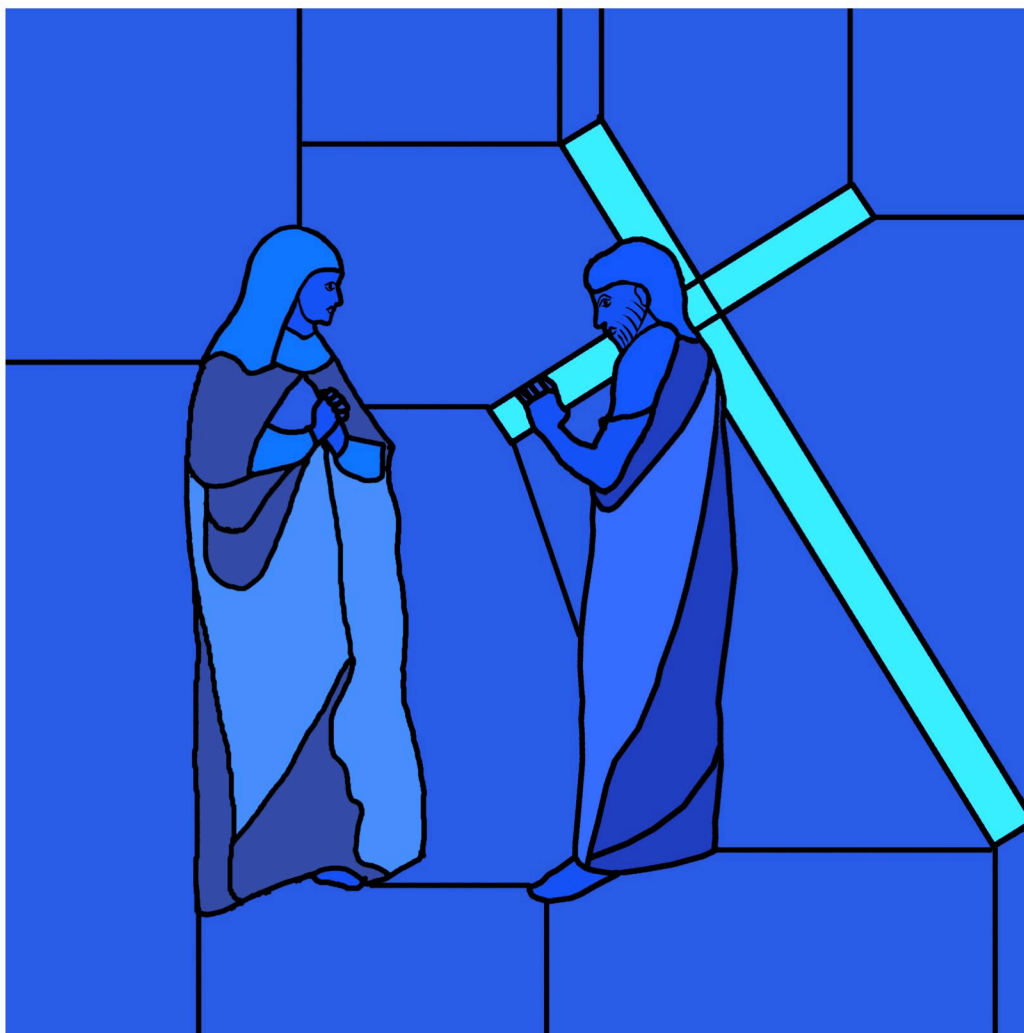
Station I - Jésus est condamné à mort.



Station II - Jésus est chargé de sa croix.

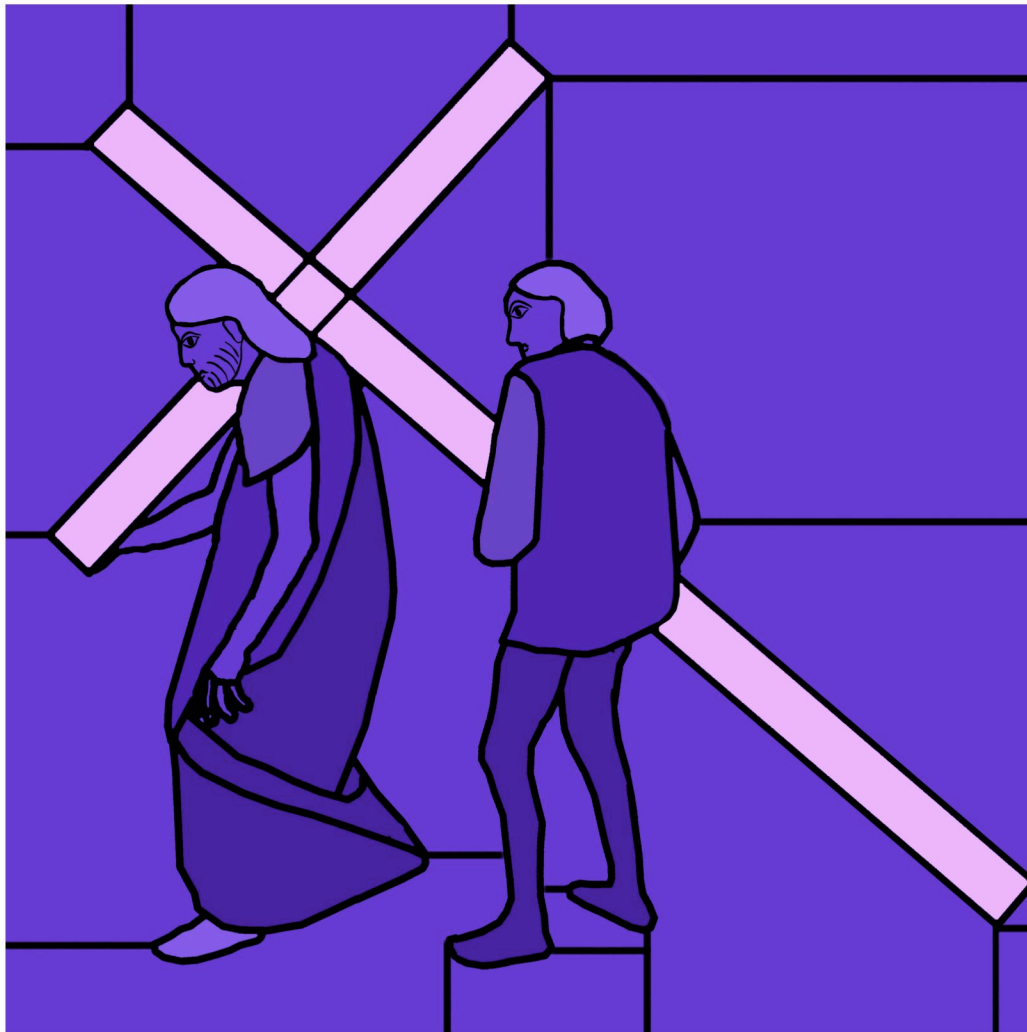


Station III - Jésus tombe sous le poids de sa Croix.

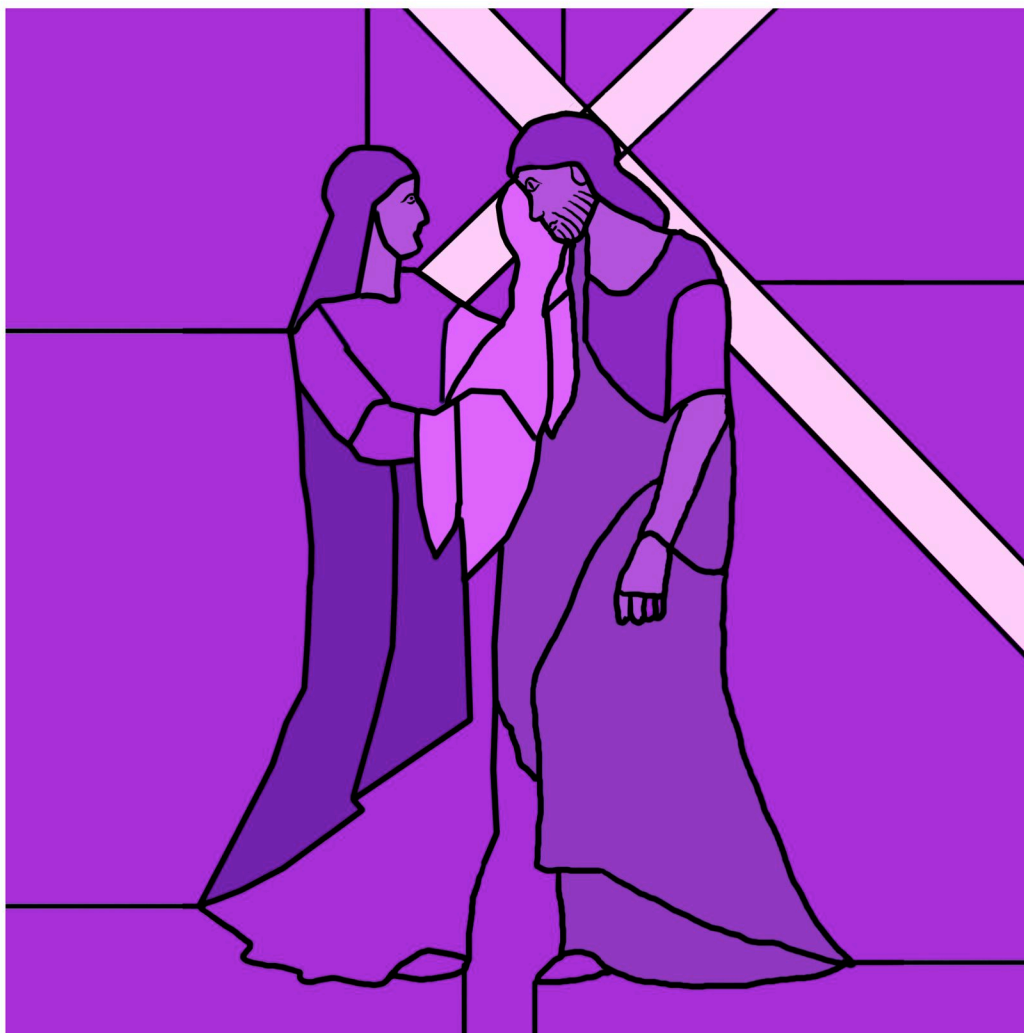


Station IV - Jésus rencontre sa Sainte Mère.

6

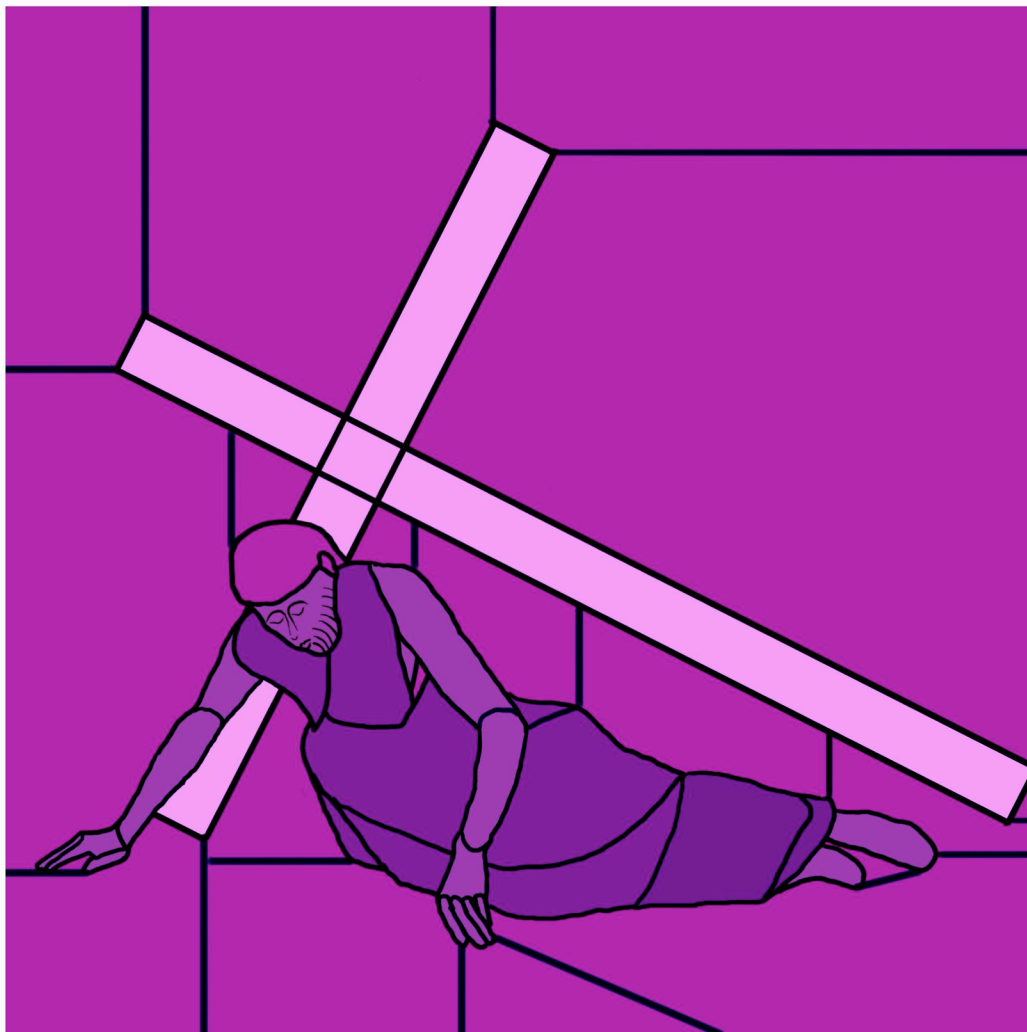


Station V - Simon de Cyrène aide Jésus à porter sa Croix.

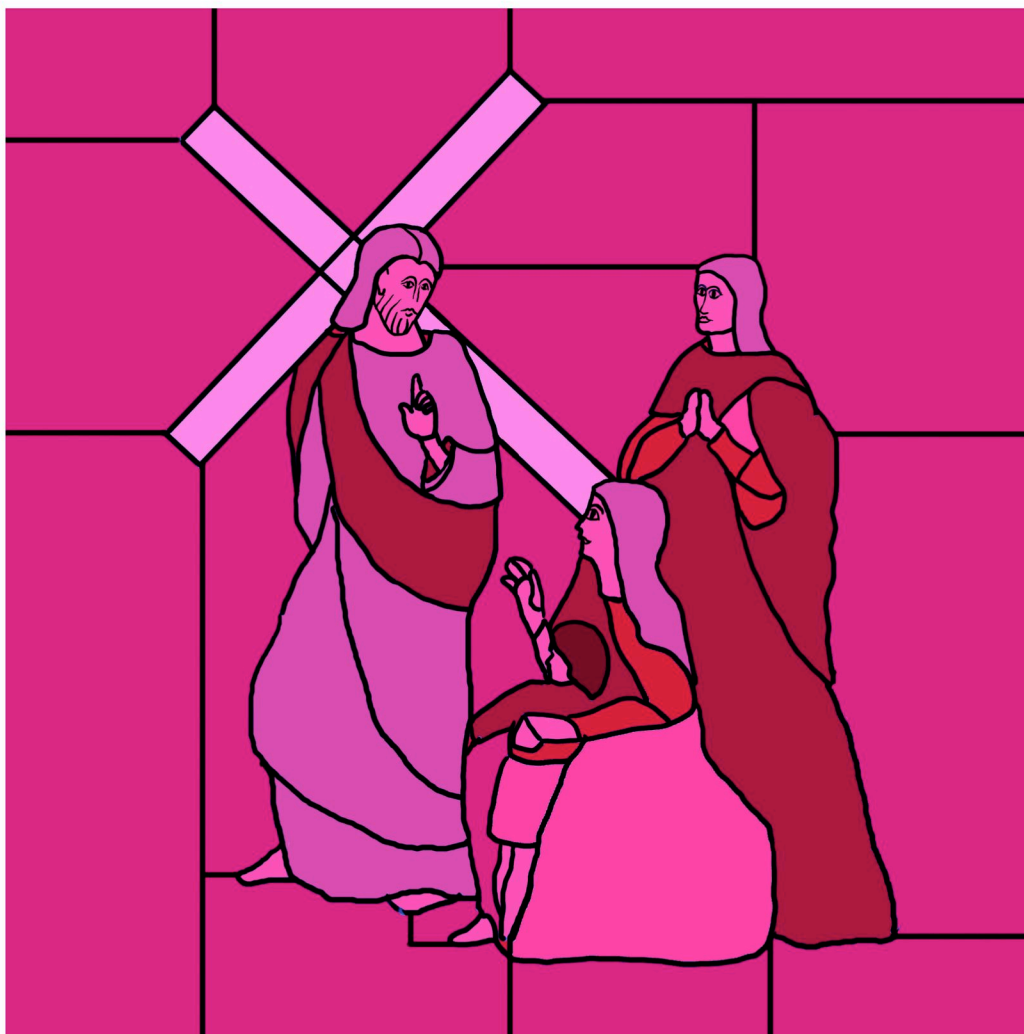


Station VI - Une femme pieuse essuie la face de Jésus.

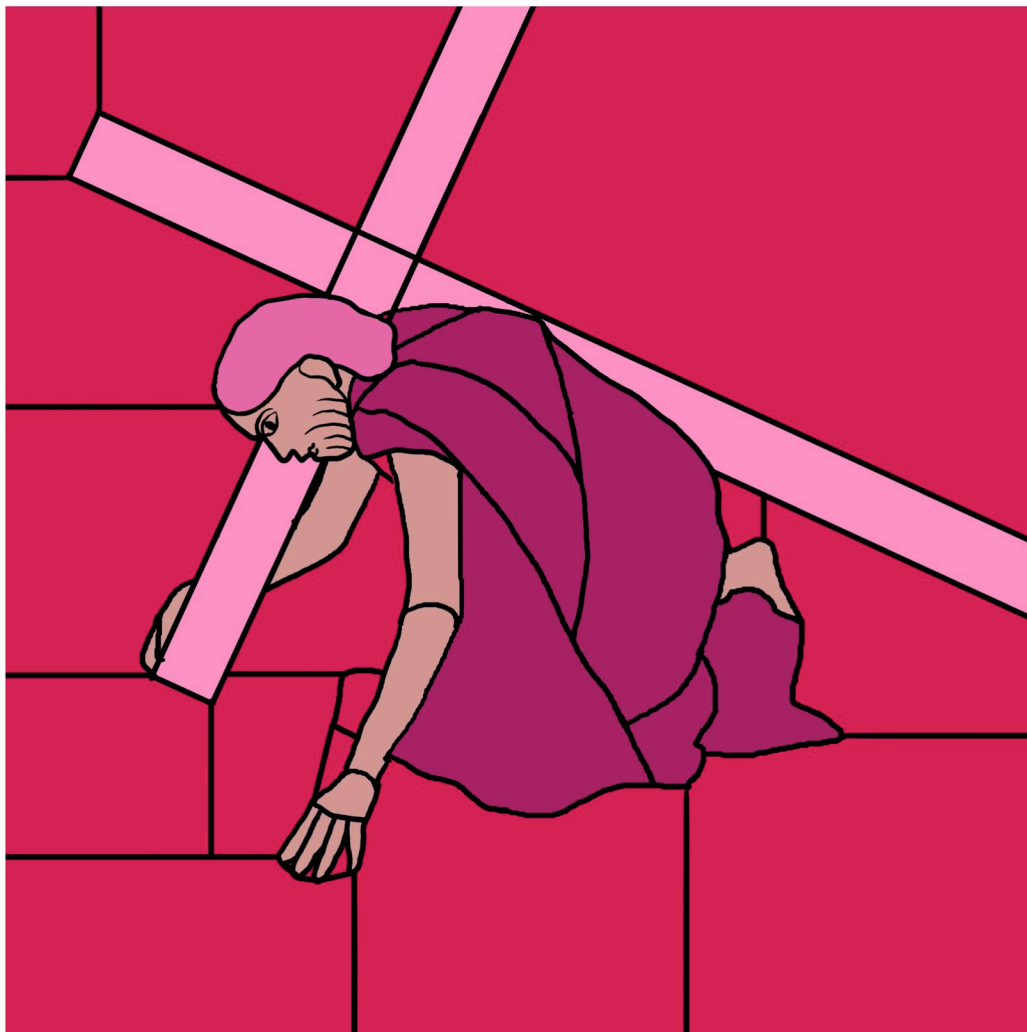




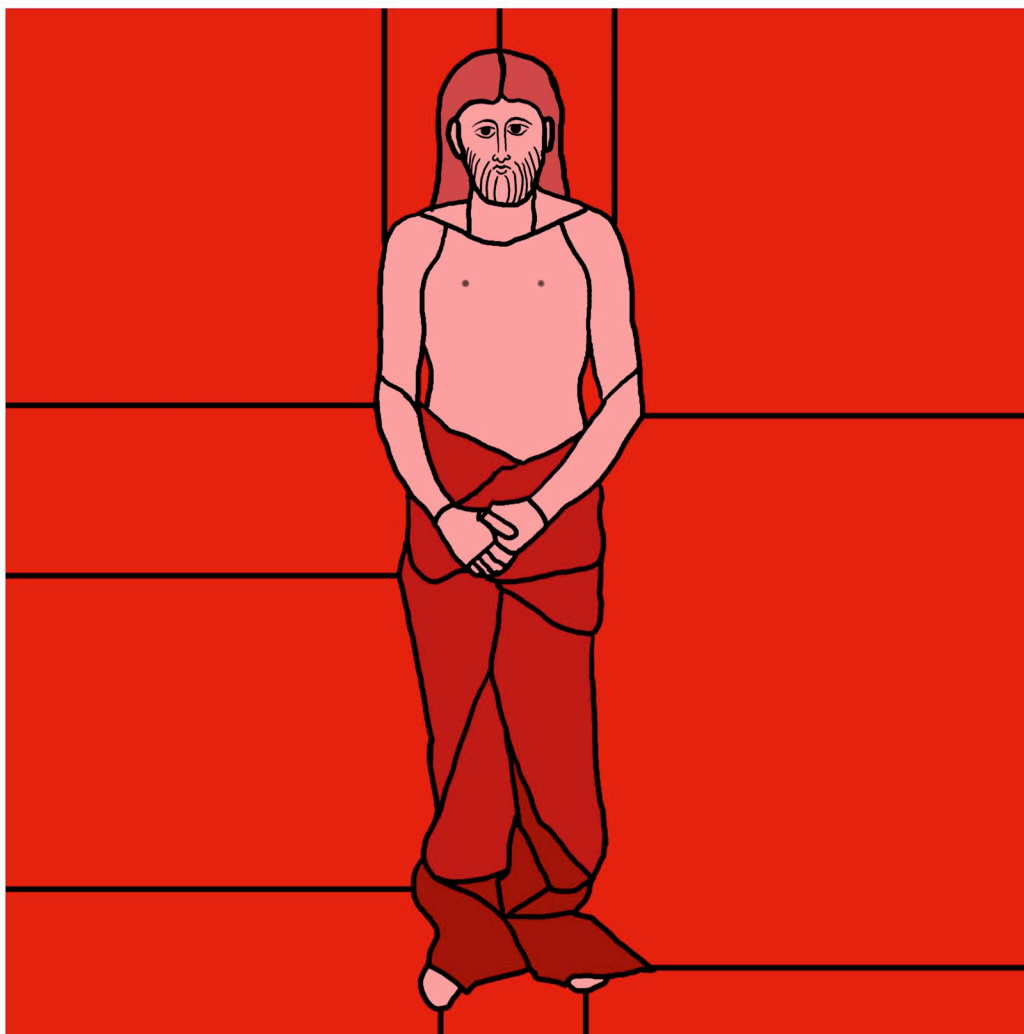
Station VII - Jésus tombe pour la seconde fois.



Station VIII - Jésus console les filles de Jérusalem.

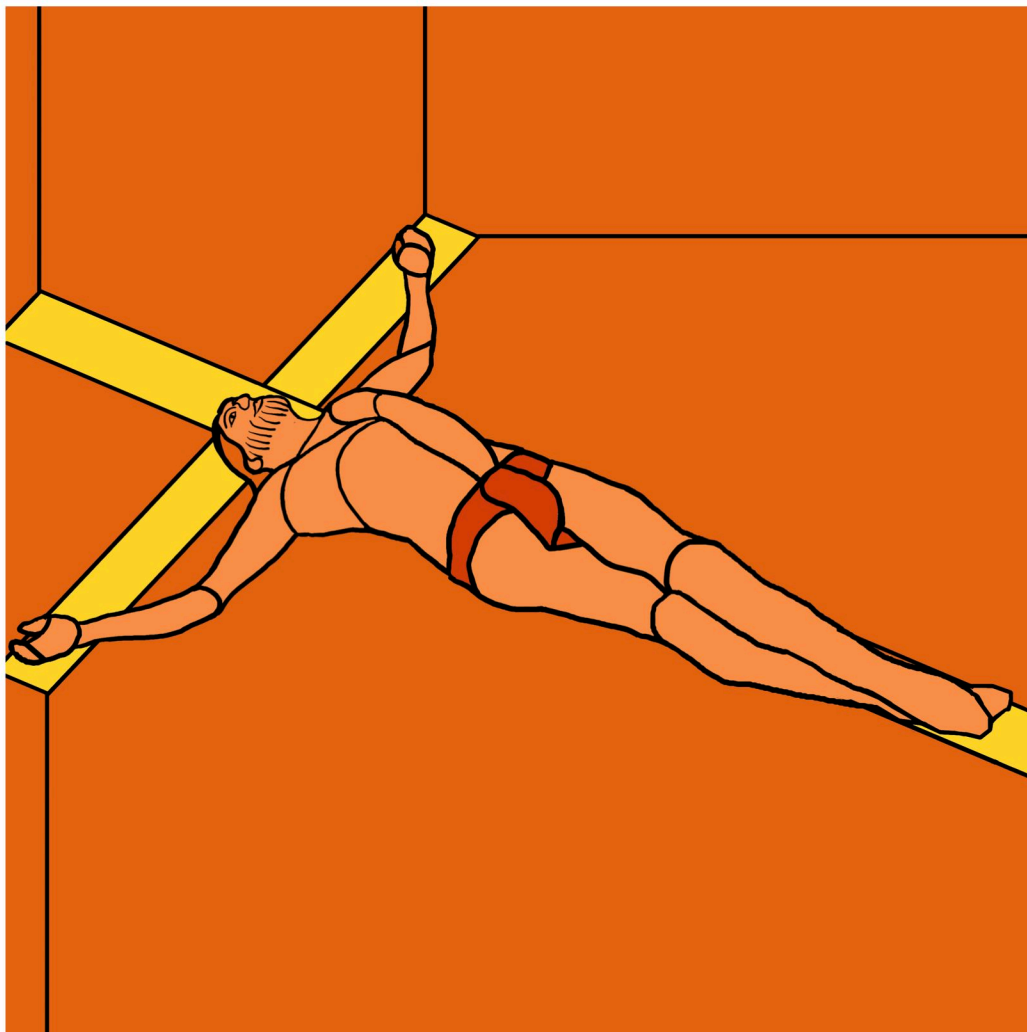


Station IX - Jésus tombe pour la troisième fois.

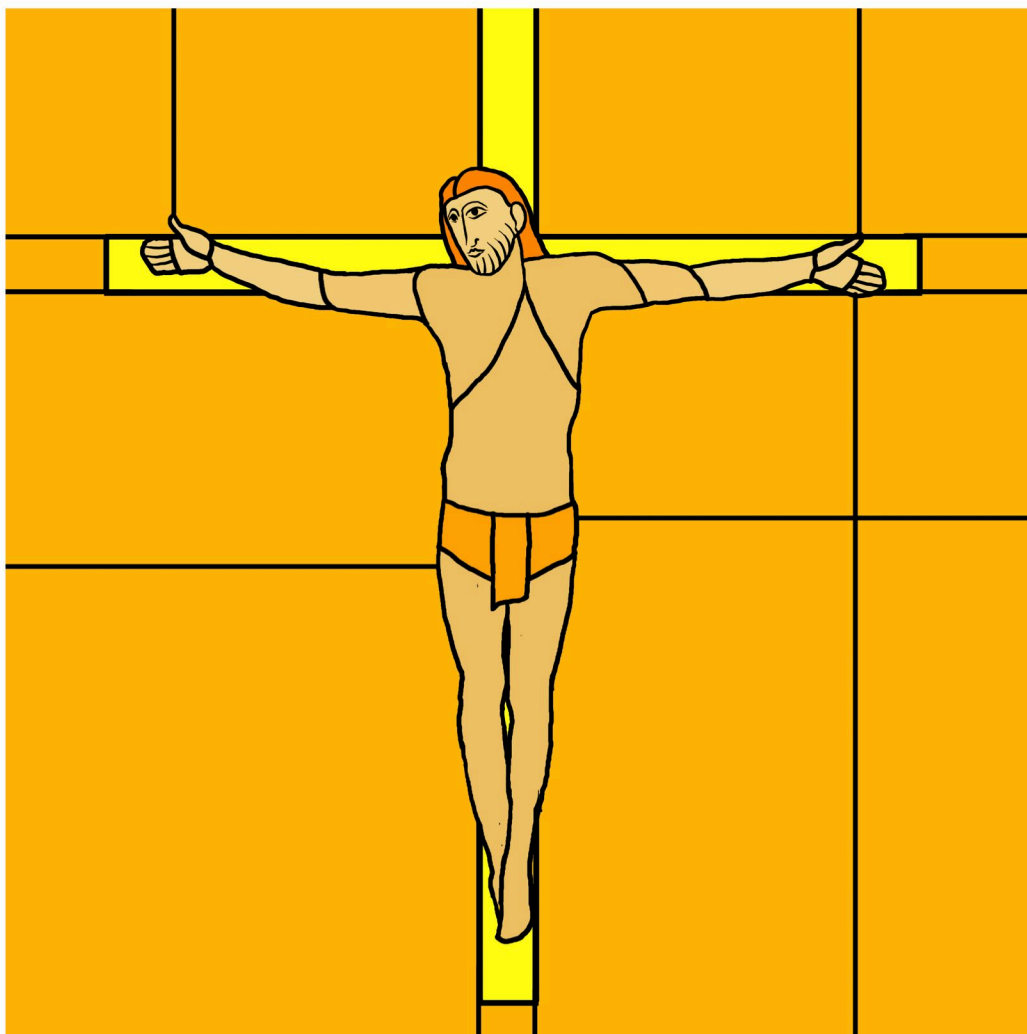


II

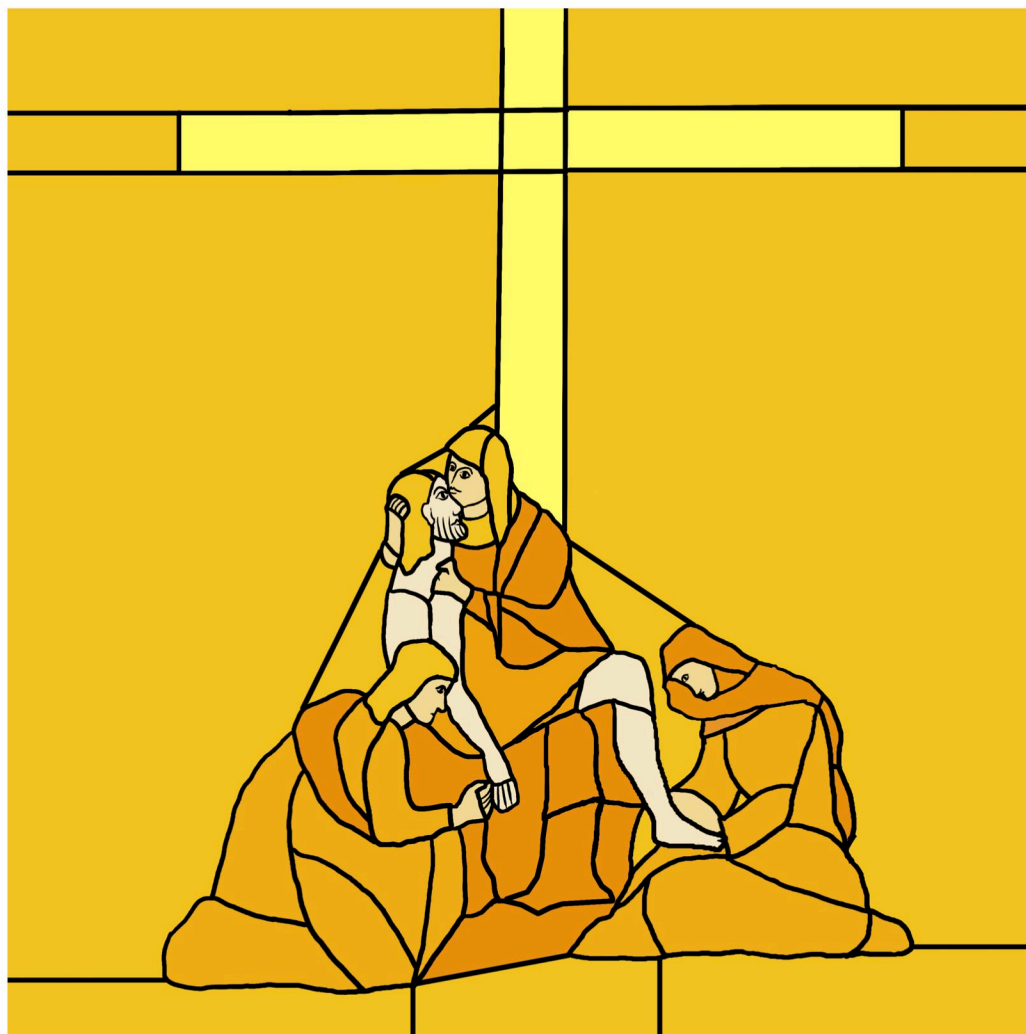
Station X - Jésus est dépouillé de ses vêtements.



Station XI - Jésus est cloué sur la Croix.



Station XII - Jésus meurt sur la Croix.

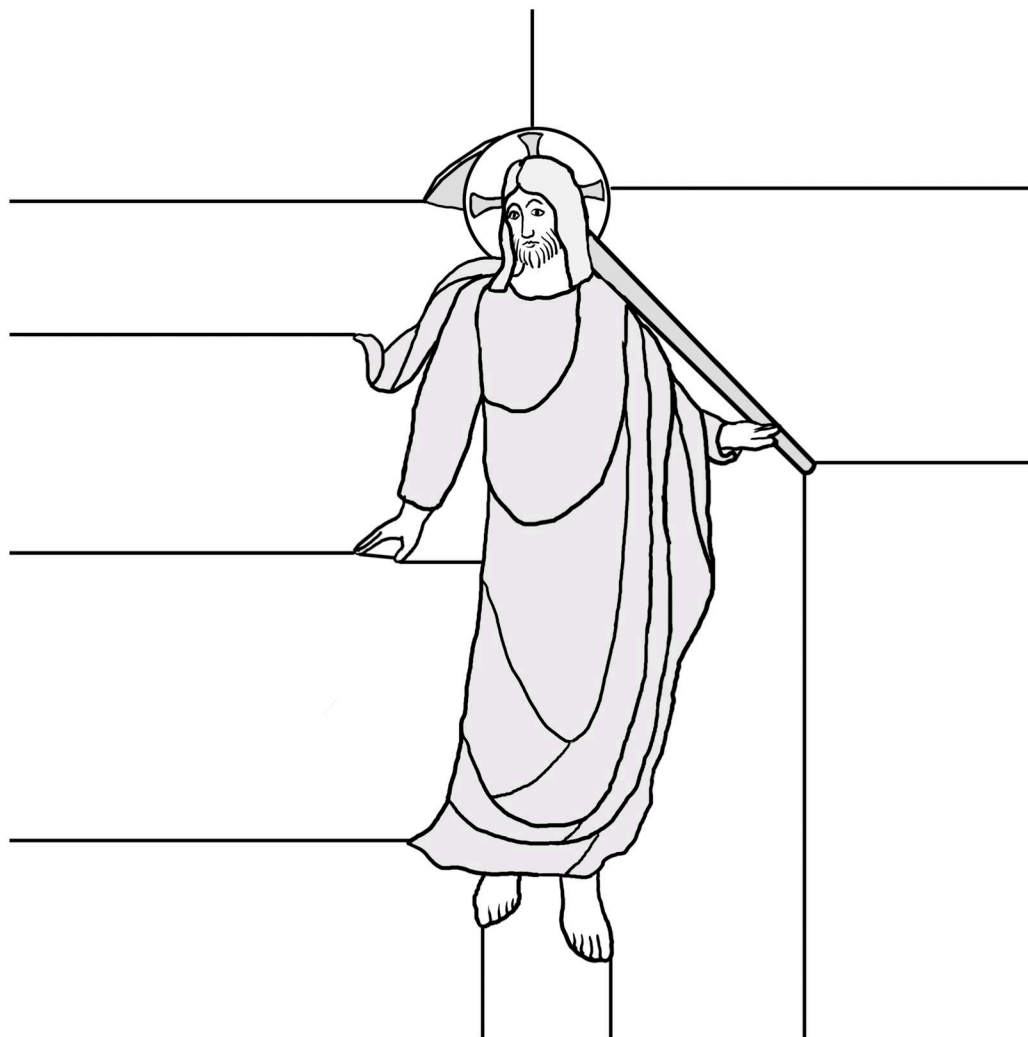


Station XIII - Jésus est descendu de la Croix et remis à sa Mère.



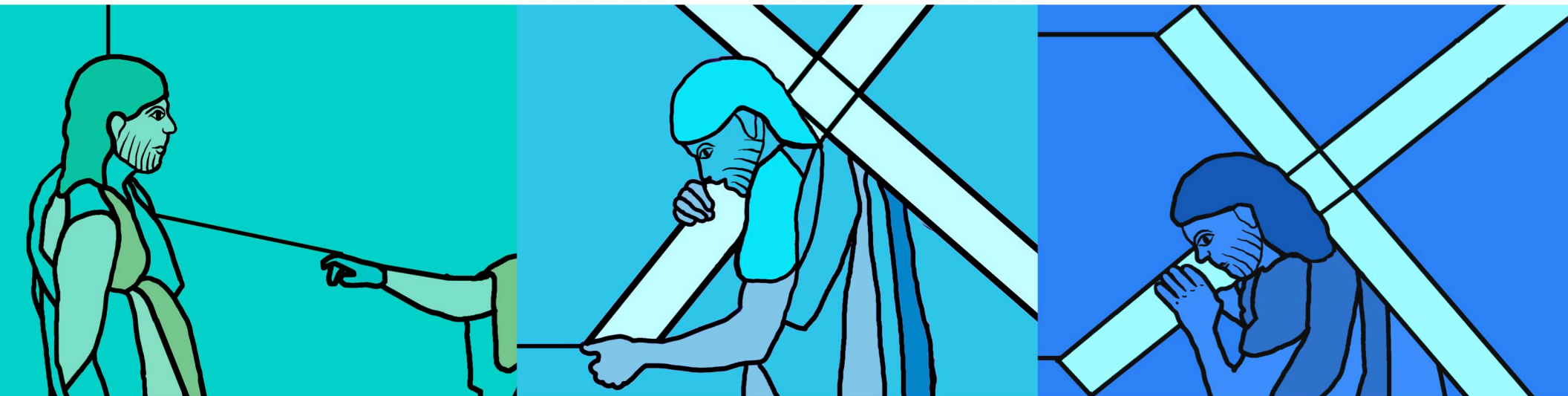
Station XIV - Jésus est mis au tombeau.



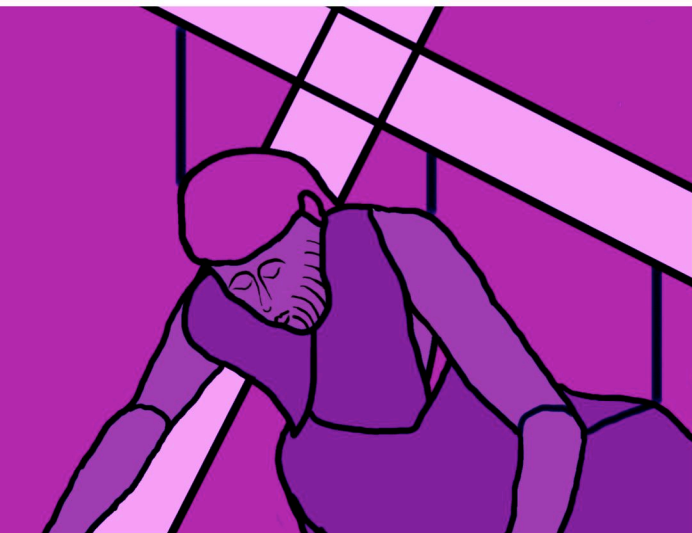


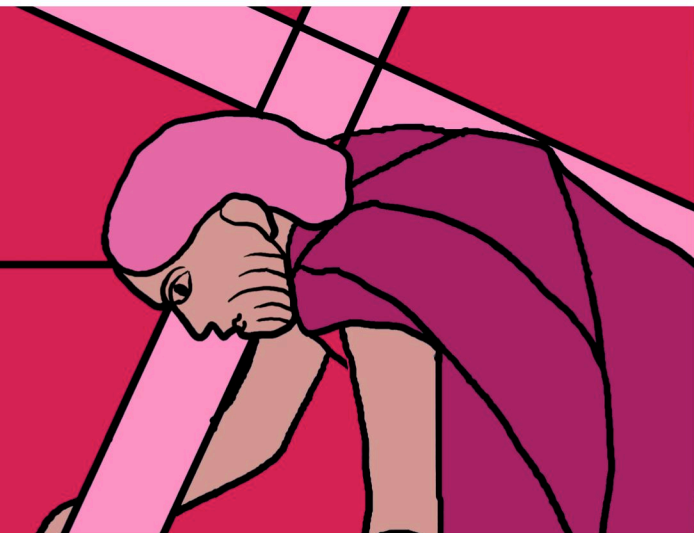
Station XV - La résurrection.

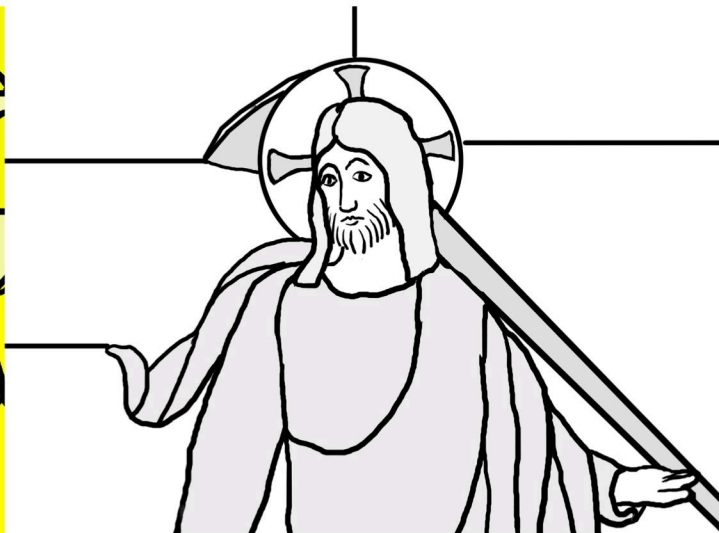
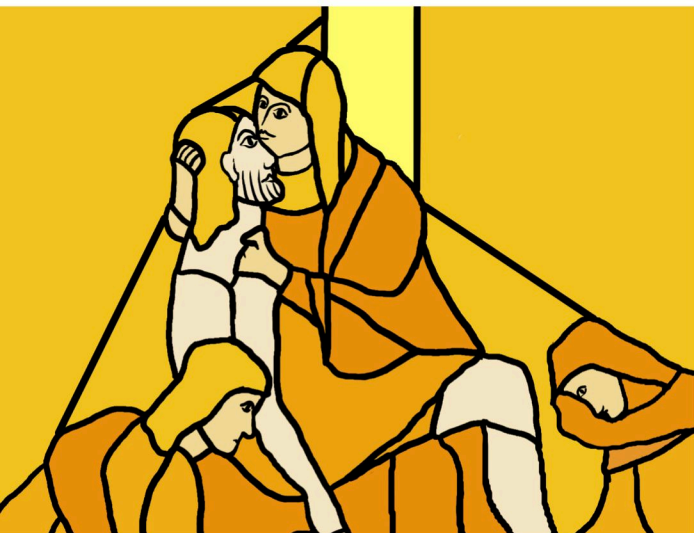












octobre 2007